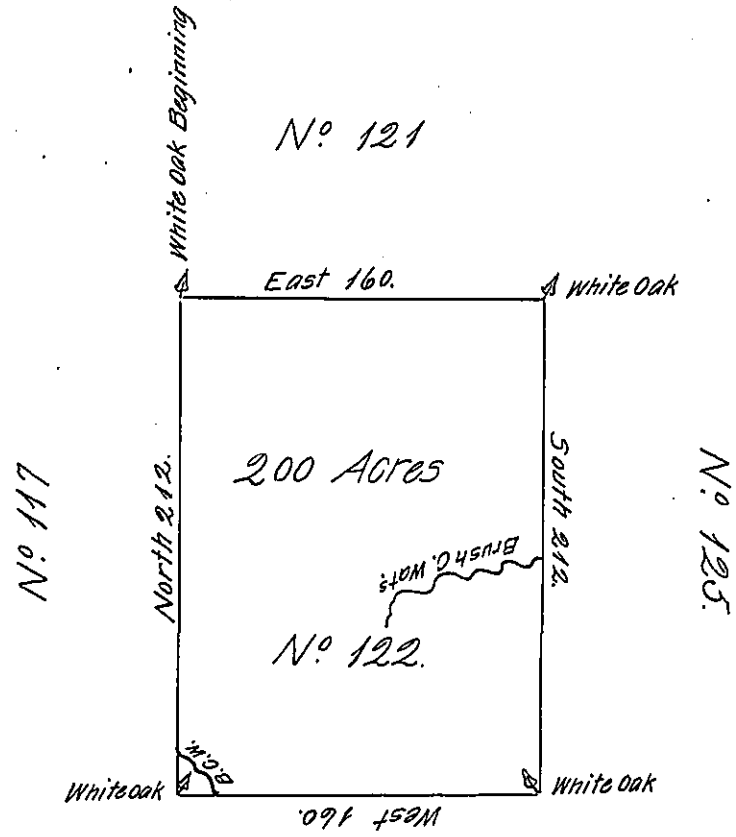


✓



Nº 123

The Above is a Draught of a Survey made in the Month July 1785 In pursuance of Instructions from the Surv<sup>r</sup>. Gen<sup>l</sup> dated the 22<sup>d</sup> day of January 1785 Situate on the North Side of the Ohio River on the Waters of Brush Creek in District Nº 2. Containing two hundred Acres with Allowance of 6 P. Cent.

Dan<sup>l</sup> Leet D.S.

John Lukens Esq<sup>r</sup> Surv<sup>r</sup>. Gen<sup>l</sup>

IN TESTIMONY that the above is a copy of the original remaining on file in the Department of Internal Affairs of Pennsylvania, made conformably to an Act of Assembly approved the 16th day of February, 1833, I have hereunto set my Hand and caused the Seal of said Department to be affixed at Harrisburg, this fourteenth day of November 1905.

*Spencer Perin*  
Secretary of Internal Affairs.